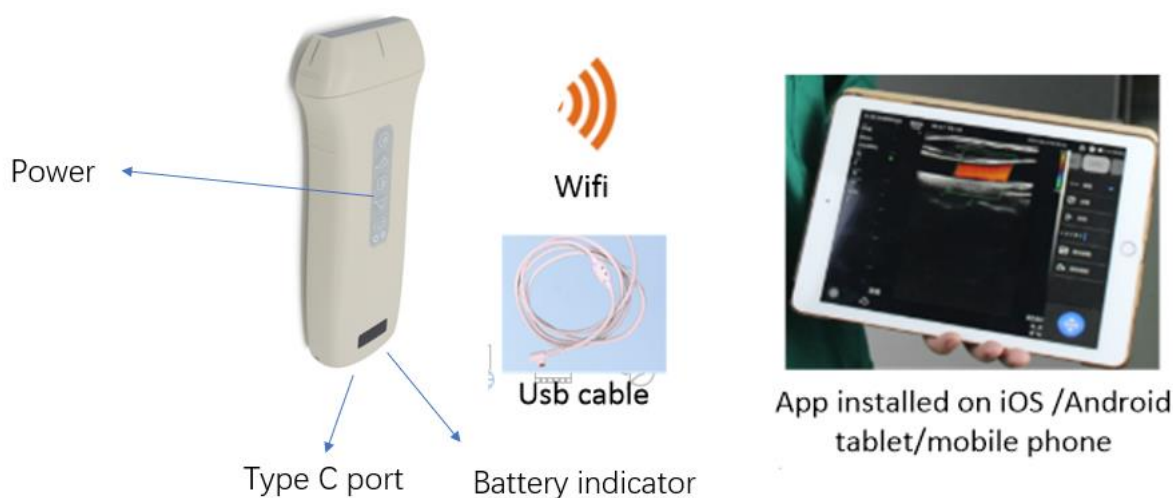


WIFI&USB Ultrasonic Diagnostic Probe Scanner Easy Operation

一.Product structure composition



Serial number	Structure name	Function
1	Main Unit	Include ultrasonic circuit board, lithium battery, phased array probe. realize ultrasonic transmission, reception and processing.
2	Linear Array probe	Application:Small part/Vessel,Lung
3	Power button	1)Short Press this button to turn on the main unit, green light on. 2)Short Press this button while scanning to freeze and unfreeze an image. 3)Long press this button for 5s to turn off the main unit.
4	Battery indicator	Total of 4 grids battery display.
5	Wifi	The main unit has built-in 5Gwifi, no external wireless network is required, and the connection between the main unit and the tablet is realized.
6	TypeC usb port	Used for connect to Android tablet or mobile phone. Used for charge battery. In addition, the machine can also be charged wirelessly.
7	Usb cable	Used for connect to Android tablet or mobile phone or charger.
8	App	Android, iOS and Windows all available.
9	Tablet/mobile phone	iPad,iPhone,Android,Windows system hardware support.

二.Operating procedures

1. How to Turn on/off: Short Press the power button, turn on the main unit. Long press the power button for 5 seconds, turn off the main unit.

2. Software operating Environment: Android More than 10.0 version that can be running smoothly. iOS at least version 8.0. Windows all support.

3. Software Installation: iOS, Search "microVue" on APPstore. Android, click microVue.apk to install.Windows, click WirelessUSG.exe to install, and if you want to use usb connection,you need install usb driver "USB_Probe_Driver" so that the system can recognize the usb probe.

4. How to connect machine:

Wifi:

a) Turn on the machine. Find the machine Wifi hotspot starting with "PA-2C" in the Settings-WLAN on tablet or mobile phone,click "Connect", enter the serial number on the back of the main body, a string of 10-digit letters and numbers starting with "pa*****", and enter it in lowercase letters.

- b) Open the app “microVue”, enter login interface, select Administer or Operator, enter initial password “123456”, you can select “Auto login” according to your need, then confirm, default into the B-mode scan interface.
- c) Wifi communication channel have been setted by manufature. If the channel is busy, you can setting the transmission channel number at "Settings-Wireless Channel Setting" in app and restart the machine to ensure the smooth image.

Notice	<p>1.Because Bluetooth and WiFi share antennas, it is necessary to turn off the Bluetooth function of the mobile terminal, otherwise it will affect the WiFi transmission.</p> <p>2.Turn off the "location" function of the mobile terminal.</p> <p>3.When you change the connection of the mobile terminal device, you need to restart the ultrasound host before connecting.</p>
--------	--

Usb:

- a) Use the USB cable in the accessory to connect the machine to the Android tablet or mobile phone.turn on the machine.
- b) Open the app “microVue”, enter the login interface, select Administer or Operator, enter initial password “123456”, you can select Auto login according to your need, then confirm, default into the B-mode scan interface.

5. How to switch mode:

- a)iOS and Android: slipe left and right to swith image mode between “B,B/M,C,PW” on the upper right corner of the main interface.
- b)Windows: mouse click the image Mode.

6. How to adjust the parameters:

Click the name of the parameter you want to adjust on the right or the bottom of the main interface,until the appropriate value based on the current image requirements.

7. How to save the image and video:

iOS and Android:

Freeze, click "save image" or "save video" on tablet screen, the system saves image or the corresponding frame number images selected by the user in the settings menu to the data table. then you can browse image or video in data table,slide left on the image or video, then can "export, watch, or delete". If select export, will save image or video to the external storage directory “microVue” folder with the default file name, and the file exists in the "jpg" and “dcm” or “mp4” format.

Windows:

- a) Freeze, click "save image" , the system saves image to the browse image area on the right. and then you can click it to watch the image, double click it to delete, export it to the external storage directory “WirelessUSG” folder in the app installation directory with the default file name, and the file exists in the "png" and “dcm” format.
- b) Freeze, click "save video", the system saves the corresponding frame number image selected by the user in the settings menu to the external storage directory “WirelessUSG” folder in the app installation directory with the default file name directly, and the file exists in the "mp4" format.

8. How to measure:

- a)The image needs to be frozen before the measurement, click"Measure",it will show up the measurement interface.
- b)The user selects the measurement items as needed, including distance, angle, speed, heart ratio,S/D,LV function Measurement Package.

9. How to comment:

The image needs to be frozen before the annotation, click “Comment”, Click where you need to comment in the image area, enter in edit annotation.

10. How to charge:

Usb charging.